



FUNDRAISING WHAT'S ON GUIDE



AUTUMN/WINTER 2025/26



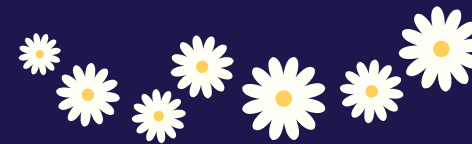
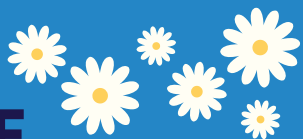
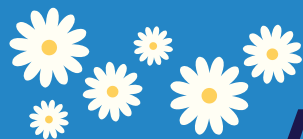
 [eastlancashirehospice](#)
 [east-lancashire-hospice](#)
 [eastlancshospice](#)

 Registered with
FUNDRAISING
REGULATOR

Registered Charity No. 1075653



East Lancashire
Hospice



AT A GLANCE

WHAT'S ON GUIDE AUTUMN/WINTER 2025/26

SEPTEMBER



Gifts in Wills Event
25th September



Stadium Sleep Out
10th October



Autumn Raffle
10th October



Book your tickets here!



NOVEMBER



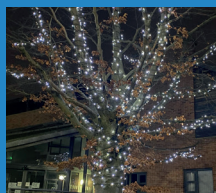
East Lancashire Hospice Christmas Fayre
16th November



East Lancashire Hospice Charity Ball
29th November



Festive Breakfast
6th December



Light Up a Life
14th December

JANUARY



Christmas Tree Collection
9th - 11th January



East Lancashire Hospice 10k and 2k Race
18th January



Will Week
26th - 30th January



60 Miles in March
1st - 31st March

MARCH

T. 01254 965877
E. FUNDRAISING@EASTLANCOSHOSPICE.ORG.UK

25TH SEPTEMBER 2025

GIFTS IN WILLS EVENT

East Lancashire Hospice invites you to a special afternoon at Samlesbury Hall

Join us to discover how leaving a gift in your Will can help secure the future of East Lancashire Hospice's vital work. Enjoy refreshments and an exclusive tour of Samlesbury Hall.

Location: Samlesbury Hall, Preston New Rd, Samlesbury, Preston PR5 0UP

Time: 11am – 2:00pm

Price: FREE Event

Register: fundraising@eastlancshospice.org.uk / 01254 965877

Please ensure you register your interest if you are attending as it is a free ticketed event.





STADIUM SLEEP OUT

proudly sponsored by

PRESTIGE BEDS
— A Family Business Since 1959 —

10TH OCTOBER 2025

STADIUM SLEEP OUT

Sponsored by Prestige Beds

East Lancashire Hospice & Accrington Stanley Community Trust invite you to an unforgettable evening at Wham Stadium!

Join us for our brand-new fundraising event! Kick off the night with a lively pub quiz, then sleep under the stars at Accrington Stanley's iconic stadium. Every penny you raise supports the incredible work of East Lancashire Hospice and Accrington Stanley Community Trust — two charities that work tirelessly to support local people.

Location: Wham Stadium, Livingstone Rd, Accrington, BB5 5BX

Time: Pub Quiz: 8pm – 11pm / Sleep Out: 11pm – 6am / Breakfast: 6am – 7:30am

Price: Adult £30 / Children (14+) - £20

Your registration includes: Branded merchandise, supper and breakfast.

Register: www.eastlancshospice.org.uk/stadiumsleepout



10TH OCTOBER 2025

AUTUMN RAFFLE

Sponsored by CSH

Feeling lucky? Just imagine what you could do with £2,000!

For only £1 per ticket or £20 per book, you could take home a huge £2,000 in our Autumn Raffle! For every £1 that is generously donated, you are helping East Lancashire Hospice to care for even more people in our community who need access to our services. Simply sell your tickets to your friends and family, or purchase a few for yourself. With three cash prizes up for grabs, our Autumn Raffle is worth taking part in. The raffle will be drawn on Friday 10th October 2025 and winners will be contacted directly by a member of the fundraising team at East Lancashire Hospice. Purchase your tickets online, from our charity shops, main reception at East Lancashire Hospice or from Café Retreat.

Price: £1 per ticket

Prizes: 1st prize: £2,000 / 2nd prize: £500 / 3rd prize: £100

Register: www.eastlancshospice.org.uk/autumn-raffle



BeGambleAware

GAMBLING COMMISSION

16TH NOVEMBER 2025

CHRISTMAS FAYRE

Sponsored by Barton & Hallworth Funeral Services

Kickstart the festive season at our magical Christmas Fayre!

Join us for a festive day filled with Christmas cheer! Explore a variety of stalls offering crafts, cards, and unique gift ideas. Pop by our Charity Pop-Up Shop for all your Christmas clothing needs and refuel at Café Retreat with delicious food and refreshments. Children can visit Father Christmas and enjoy some festive crafting fun!

Location: East Lancashire Hospice, Park Lee Rd, Blackburn, BB2 3NY

Time: 11am – 3pm

Price: £2 (children free)

More information at www.eastlancshospice.org.uk



29TH NOVEMBER 2025

CHARITY BALL

Sponsored by The Cardboard Box Company

An unforgettable night of glamour, fine dining, and entertainment — all for a wonderful cause!

Join us for a sparkling evening, enjoy a delicious three-course dinner, take part in a thrilling auction featuring once-in-a-lifetime prizes, and dance the night away with unforgettable entertainment that's sure to get you on your feet! Every ticket sold helps us continue providing vital care and support to patients and families across our community.

Location: The Dunkenhall Hotel, Blackburn Rd, Clayton-le-Moors, Blackburn, Lancashire, BB5 5JP

Time: 6:30pm – 1am

Price: £60pp or a table of 10 for £550

Tickets: www.eastlancshospice.org.uk/charityball



14TH DECEMBER 2025

LIGHT UP A LIFE

A special evening of remembrance at East Lancashire Hospice

Come together as a community to remember our friends and family who have died. This heartfelt event offers the opportunity to dedicate a star on our Light Up a Life trees, with readings from Hospice staff and supporters, music from Blackburn People's Choir, and time to reflect on the memories we hold dear. Let's celebrate the lives of those who have died and cherish the memories that will always shine brightly in our hearts.

Location: East Lancashire Hospice Gardens, Park Lee Rd, Blackburn, BB2 3NY

Time: 4pm – 5:30pm

Price: FREE

Register interest: www.eastlancshospice.org.uk/lightupalife25

Please note: this event is held outside, please dress appropriately for all weathers and wrap up warm.

6TH DECEMBER 2025

FESTIVE BREAKFAST

Sponsored by Barton & Hallworth Funeral Services

A magical morning for children and families!

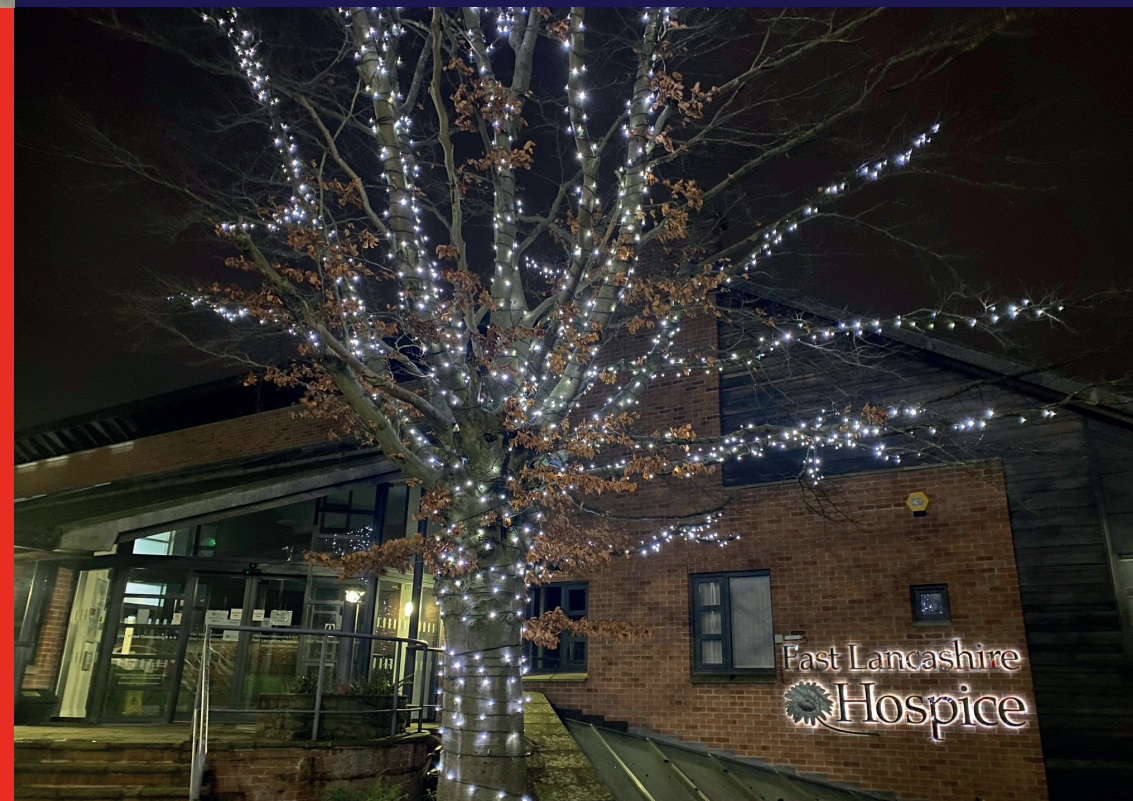
Bring your little ones for a magical festive breakfast experience! Enjoy delicious food together, meet our festive characters for storytelling, singing, and Christmas crafts, and don't forget to write your letter to Santa.

Location: East Lancashire Hospice, Park Lee Rd, Blackburn, BB2 3NY

Time: 9am – 11am / 11am – 1pm / 1pm – 3pm (please select your time slot when booking)

Price: £18 per child / £8 per adult / £45 family of 4

Tickets: www.eastlancshospice.org.uk/festive-breakfast





9 – 11TH JANUARY 2026

CHRISTMAS TREE COLLECTION

Supported by Intack Self Drive and East Ribble District Freemasons

Make disposing of your tree hassle-free while supporting East Lancashire Hospice!

Let us take care of your Christmas tree while you support vital Hospice services in your community. For a suggested donation of £8 per tree, our team will collect and recycle back into parks within our communities.

Price: Suggested donation £8 per tree

Register: www.eastlancshospice.org.uk/treecollection



18TH JANUARY 2026



EAST LANCASHIRE HOSPICE 10K AND 2K RACE

Organised by The Vella Group & Carris Consulting

Kick off the new year with one of the first races of the season!

Join us for a fantastic day of running, challenge yourself with our 10k or bring the whole family along for the 2k fun run. Every step you take helps East Lancashire Hospice continue providing vital care and support in your community. Start your year on the right foot and make a difference!

Location: The Vella Group, Gaskell Court, Alan Ramsbottom Way, Great Harwood, Blackburn, BB6 7UF

Time: 11am start / arrive from 9:15am

Price: £18 (10k) / £5 (2k)

Register: www.eastlancshospice.org.uk/10k

26TH – 30TH JANUARY 2026

WILL WEEK

What will your legacy be?

We have teamed up with local solicitors across Blackburn, Darwen, Hyndburn and the Ribble Valley for Will Week, giving you the opportunity to write your Will and support your local hospice.

As part of Will Week, local solicitors kindly donate their time and expertise to support East Lancashire Hospice. In return for a donation to the hospice, you can have your Will written and the solicitor will waive their usual fees.

The suggested donation is £150 for a single Will or £300 for a mirrored Will.

To take advantage of this service, please phone the solicitor of your choice (found on our website) and book an appointment between Monday 26th to Friday 30th January 2026.

Please note that appointments do not have to take place during this period, you simply have to book your appointment during this time.

For more information, please get in touch with our fundraising team - 01254 965877.



1ST – 31ST MARCH 2026

60 MILES IN MARCH

Take on our virtual challenge and raise money for East Lancashire Hospice!

Walk 60 miles this March to help families in need of hospice care. Hospices across England provide direct support services to 60,000 family members, friends and carers each year. By committing to walk 60 miles in March, you're raising money for East Lancashire Hospice – helping to care for more people with life-limiting illnesses across Blackburn, Darwen, Hyndburn and the Ribble Valley.

It's free to take part – just raise what you can for East Lancashire Hospice.

Join our exclusive Facebook group (60 Miles in March) to connect with us, track your progress and stay motivated!

Location: Virtual

Price: FREE

Register: www.eastlancshospice.org.uk/60miles



DO YOU WANT TO FUNDRAISE FOR EAST LANCASHIRE HOSPICE?

Whether it's holding a coffee morning, planning your own event or taking on a challenge – get in touch with our fundraising team!

☎ 01254 965877

✉ fundraising@eastlancshospice.org.uk



CHRISTMAS MEALS AT CAFE RETREAT



STARTERS

Roasted carrot soup, honey drizzle, snipped chives, home-made roll
Allergen; celery, wheat, milk



Chicken liver parfait, caramelised onion, toast, salad leaves
Allergen; sulphur dioxide, milk, eggs

Falafel, cucumber yoghurt (without if needed), salad leaves, salted cashew nuts, toasted pitta bread shards
Allergen; mustard, sulphur dioxide, tree nuts, wheat

MAINS



Roast turkey, all the trimmings, roast gravy, cranberry sauce
Allergen; wheat, milk

Mushroom, leek and pine nut filo purse, roasted root vegetables, mushroom tarragon sauce
Allergen; wheat

Masala marinated salmon fillet, jewelled basmati rice, lime and tomato salsa
Allergen; fish, wheat

DESSERTS



Christmas Pudding, navy rum sauce
Allergen; wheat, sulphur dioxide, milk, may contain nuts

Vegan caramelised biscuit cheesecake, sugared banana, raspberry coulis
Allergen; wheat, sulphur dioxide, milk, eggs

Chocolate brownie, chocolate sauce, Baileys cream
Allergen; wheat, sulphur dioxide, milk, may contain nuts

3 courses
for £25.00
or
2 courses
for £21.00



Call Café Retreat to book - 01254 965861 | Christmas Menu runs from 1st - 17th December
For parties of 6 or more a £5 non-refundable deposit is required per person



What will your Legacy be?

Write your Will to help us support more people who need us in the future.



East Lancashire
Hospice

East Lancashire Hospice,
Park Lee Road,
Blackburn BB2 3NY

01254 965 830
info@eastlancshospice.org.uk
www.eastlancshospice.org.uk



Registered with
FUNDRAISING
REGULATOR
Registered Charity No. 1075653
Company Registration No. 3755216